

STATE OF NORTH DAKOTA

TENTH BIENNIAL REPORT

Of The

State Library Commission



For the Period

July 1, 1924-June 30, 1926

Report 1924 - 1926

Salary Librarian	\$ 4,750.00
Clerkhire:	
Chief of Traveling Library	3,300.00
Stenographer	2,640.00
Cataloguer	3,100.00
Postage	450.00
Office Supplies	400.00
Furniture and Fixtures	200.00
Printing	400.00
Miscellaneous	500.00
Traveling Expenses	1,000.00
Traveling Library Cases	100.00
Aids To Libraries	200.00
Books	2,500.00
Preparation of Books	200.00
Binding	<u>550.00</u>
Total \$	20,290.00

NORTH DAKOTA STATE LIBRARY



3 3105 00147 5217

# STATE OF NORTH DAKOTA

## TENTH BIENNIAL REPORT

Of The

# State Library Commission



For the Period

July 1, 1924-June 30, 1926



**BOARD OF ADMINISTRATION**

June 30, 1926

E. B. Murphy.....Chairman

F. E. Diehl

W. J. Church

Minnie J. Nielson

Joseph A. Kitchen

**STATE LIBRARY COMMISSION**

Lillian E. Cook.....Secretary and Director

Bessie R. Baldwin.....Traveling Library Chief

Margaret Welch.....Reference Librarian

Bertha Severtson.....Stenographer

**LETTER OF TRANSMITTAL**

To the State Board of Administration,  
Bismarek, North Dakota.

Herewith is submitted the Tenth Biennial Report of the North Dakota State Library Commission, covering the period from July 1, 1924, to June 30, 1926.

LILLIAN E. COOK, Secretary and Director.

The Tenth Biennial report of the State Library Commission covers the period from July 1, 1924, to June 30, 1926.

The work of the Library Commission is organized along three general lines: (1) The development of library service throughout the state, (2) the operation of the traveling library department, and (3) the direction of the reference department.

## **SUMMARY**

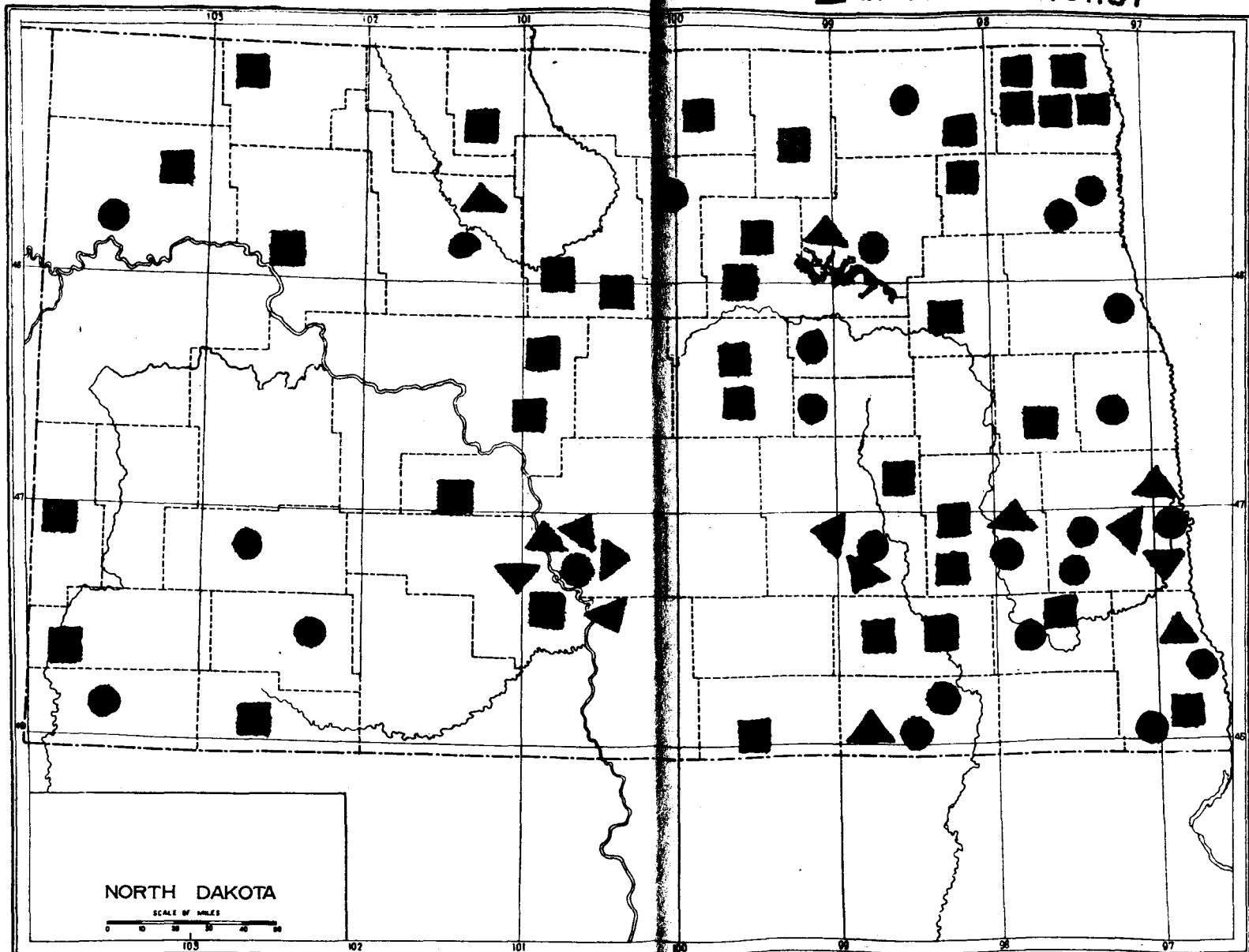
New libraries .....	4
Total tax supported libraries.....	25
Association libraries .....	35
Association libraries opened.....	4
New library buildings.....	1
Advisory visits to libraries.....	102
Addresses .....	67
Exhibits .....	4

Volumes added to Commission library:

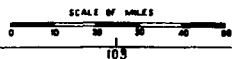
Reference Department .....	1,910
Traveling Library Department.....	1,100

# North Dakota Libraries

- Public
- Association
- ▲ Institutional



NORTH DAKOTA



## REPORT OF THE SECRETARY AND DIRECTOR

The North Dakota Library Commission was established in 1907 to (a) maintain an education reference library and a system of traveling libraries; (b) to give advice and instruction upon any matter pertaining to the organization, maintenance or administration of libraries; (c) to promote and assist the formation of libraries where none exist.

The organization has varied from time to time and at present the Commission is under the direction of the Board of Administration. In 1919 the Legislature transferred the work of the Legislative Bureau from the Library Commission to the State Law Library; therefore there is no mention of the work of this bureau in this report. An account of the activities of the Commission along the other lines indicated by law constitutes this report.

### FIELD AND OFFICE WORK

To "advise" and "instruct," to "promote" and "assist" are largely the work of the director since there is no organizer. This work can be done partly by correspondence, but can be done much better, and has been done largely, through field work. The contacts made in the field and the information gained have been of great value to the Commission, and there is also the worth while by-product of publicity. The growth in office and reference work will practically necessitate the discontinuance of field work during the next biennial period, but we hope to add a cataloger and organizer to the staff next year, which will again make field work possible.

The field work is naturally most largely done in the small towns which must depend on the state for all library help. The following work was done in sixty-five towns of varying size, in forty counties:

Less than 500 population.....	19 towns
500 to 1,000.....	18 towns
1,000 to 1,500.....	12 towns
1,500 to 2,500.....	6 towns
2,500 .....	10 towns
Visits .....	39 public libraries
	49 school libraries
	14 State schools and institutions

---

102

Organization .....	22 school and library collections
Mending demonstrations .....	30
Conferences .....	59
Library board meetings.....	29
Talks .....	16 public schools
	14 state schools
	17 clubs
	9 Parent Teachers Associations
	11 state and district meetings



The secretary and director attended (1) the annual state meetings of the N.D.L.A., N.D.F.W.C., N.D.E.A., P. T. A. and the county superintendents; (2) twenty-four county institutes and ten club district meetings; and (3) the annual mid-winter meetings of the League of Library Commissions at Chicago. At each of the mid-winter trips, visits were paid to the Wisconsin and Minnesota Commissions and conferences held.

Office work includes correspondence, conferences, preparation of book lists for small libraries or criticism of lists already prepared, helping libraries to get librarians or librarians to get libraries; suggestions for and revision of organizing work where visits cannot be made, gathering statistics, "advising, instructing and assisting" in every way possible.

### LIBRARY NOTES

A new venture of the Commission during the last biennial period has been the issuing about every six weeks of a two or three-page mimeographed publicity sheet which we have called "Library Notes." Eight numbers of "Library Notes" have been issued and it has proved valuable as a means of publicity and interchange of ideas. Most Commissions print a monthly or bi-monthly bulletin which we have not been able to afford. Until our appropriation will cover printing a news sheet, we shall try to continue the mimeographed sheet, which has proved useful enough to justify the time and expense it takes to issue it in its present form.

### EXHIBITS

The Commission held an exhibit of traveling libraries and reference material at the state fair at Fargo, July, 1924. An exhibit of club libraries and club program material was held at the meetings of the N. D. F. W. C. at Minot in 1924 and Valley City in 1925. An exhibit of graphs, etc., representing the work of the Commission, was sent to Sioux City for the regional meeting.

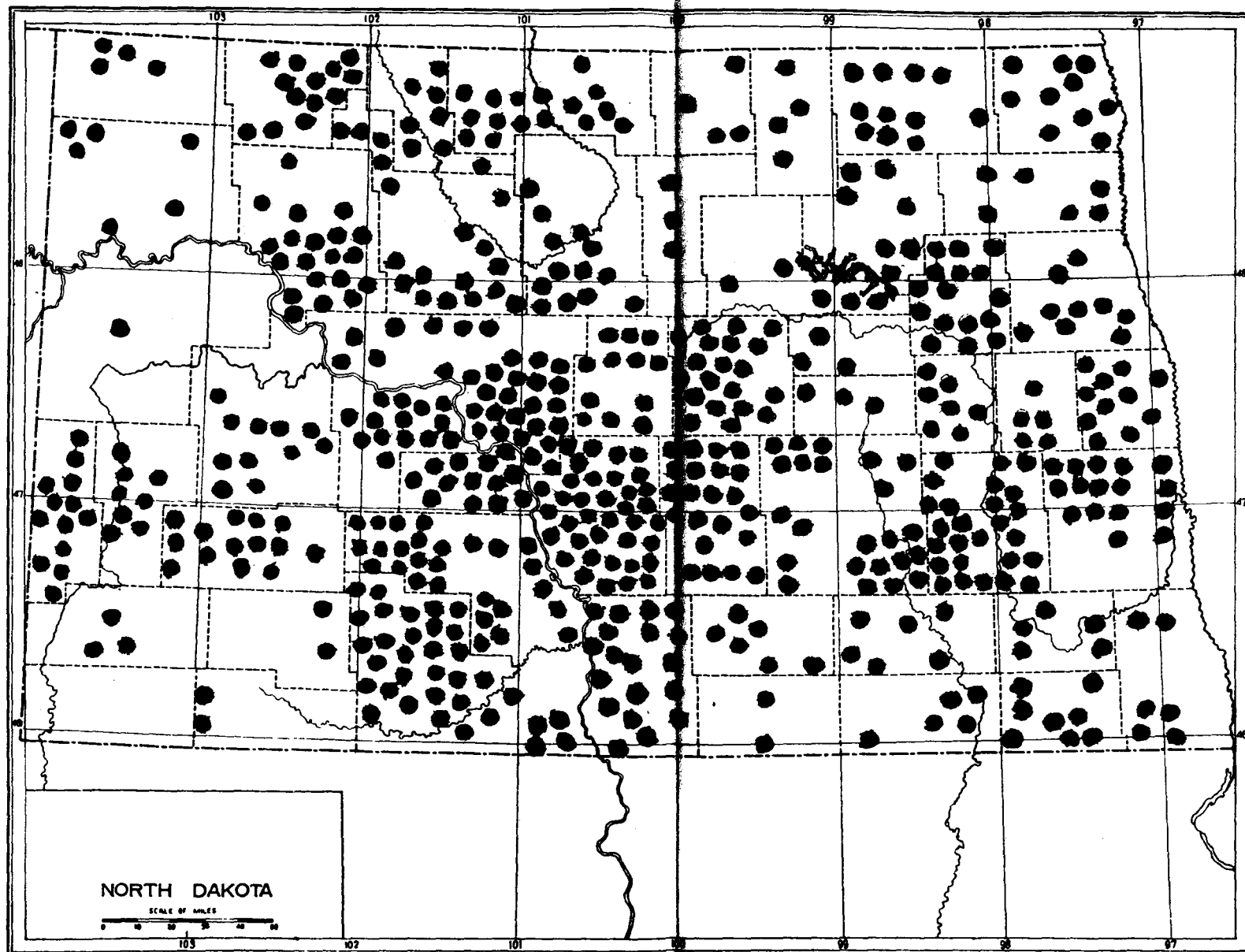
### NORTH DAKOTA LIBRARY ASSOCIATION

The 1924 meeting was held at Minot and was a joint meeting with the State Federation of Women's Clubs.

In 1925 North Dakota joined with Iowa, Minnesota, Missouri, Nebraska and South Dakota in a joint regional library meeting at Sioux City. This larger meeting, bringing as it did an opportunity to meet with other workers and hear and see some of the prominent library workers in the United States, was much enjoyed. One day was set aside for local meetings and the N.D.L.A. elected the following officers:

President .....	Catherine McSherry .....	Minot
Vice President .....	Ethel Fleming .....	Fargo
Secretary and Treasurer.....	Nora Jacobsen .....	Leeds
Directors .....	Christian Dick .....	University
	Bessie R. Baldwin.....	Bismarck
Council Member .....	Lillian E. Cook.....	Bismarck

# Traveling Libraries July 1 1924 - June 30 1926



### NEEDS

Graphs, like actions, speak louder than words. Unfortunately, complete statistics have not been kept, but the accompanying graph will show the circulation of reference and traveling library departments by biennial periods, also the number of books circulated for each dollar spent for books.

The second graph shows the growth of the circulation in the reference department and the relation between it and the total appropriation.

The law requires that the books be cataloged; this has not been done for many years: need one is for a cataloger and field worker. The circulation of the traveling libraries has fallen off the past biennium because the collections are worn, shabby and out of date: need two is for funds to get new books of current interest. The work of the reference department is growing very rapidly—almost trebling the circulation of the preceding biennium and almost quadrupling that of two periods previous. The work is well started and we can only continue to do effective and helpful work for the state if we have the books with which to do it; need three is for more money for reference books, magazines, and a part time cataloger to make them of greater service.

### TRAVELING LIBRARIES

Circulation figures for the biennium show 329 libraries sent out up to July, 1925, and 296 in the following year. Of these the type of library used appears as 161 community, 162 school and 6 special libraries in the first year, and 122, 170 and 4, respectively, in the second.

These figures are significant in the following respects: School libraries, collections of from 20 to 50 books made up especially for children's reading, show a gain, while the community libraries, adult titles in the main, show a falling off. This is a natural result of the policy adopted by the department. Attention has been concentrated on buying books for the school collections, bringing them into as nearly adequate a number and quality as funds permitted. No school in 1925-6 was obliged to take a community library because there were not enough school libraries to go around. If one was sent it was a matter of choice. There were enough school libraries to meet the requests, though they were often small. Many of them, at least, were fresh and attractive.

Community libraries, on the other hand, were increased by a small amount only—seven in 1925-6 and fewer than that the year before. To build up an adequate collection of fifty books in a community library costs, nowadays, \$75 to \$80, at the least. Children's titles can fortunately be purchased for less cost per volume. One does not expect to arouse enthusiasm or response over out-of-date and worn-looking collections of books.

In the fall of the first year nearly every Teachers' Institute was visited and the opportunity to take out application blanks for traveling libraries was brought directly to the attention of the rural teachers. In the second year the libraries had to depend largely on an established reputation as funds did not permit the personal contact at the Institutes. The number of repeat orders from the schools was gratifying and the number of satisfied letters which accompanied the return of the libraries this spring even more so.

Arrangement of circulation for the two years by counties shows Burleigh naturally in the lead, with 37, McLean with 30, while Morton and Grant each have 27. With one exception these counties are not supplied with public library service. That neither transportation expense nor population entirely determine the number, however, shows up in 10 in Pembina County and 13 in Golden Valley. An interested county superintendent can do a great deal to further the cause of good reading in his county.

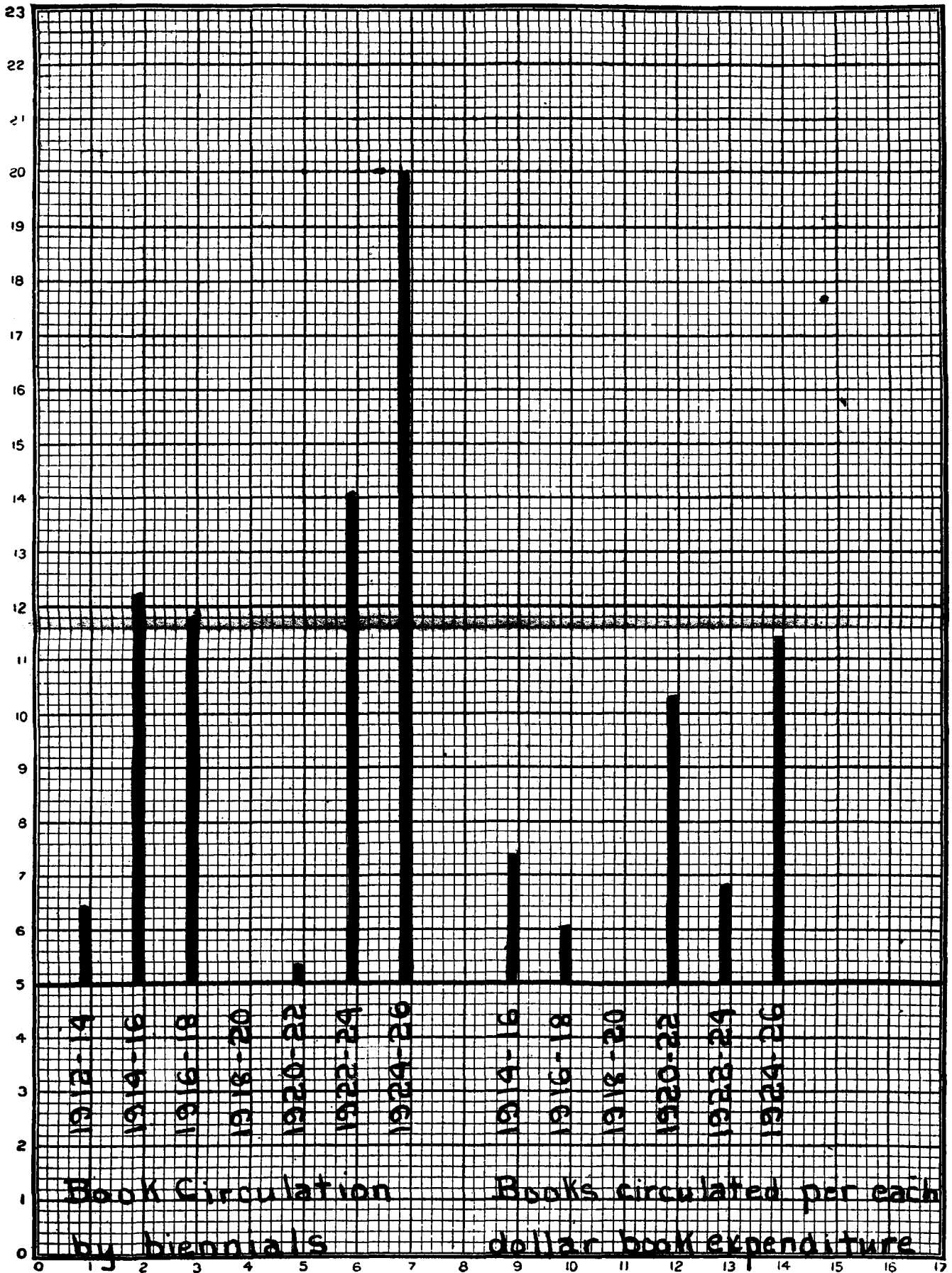
#### REFERENCE DEPARTMENT

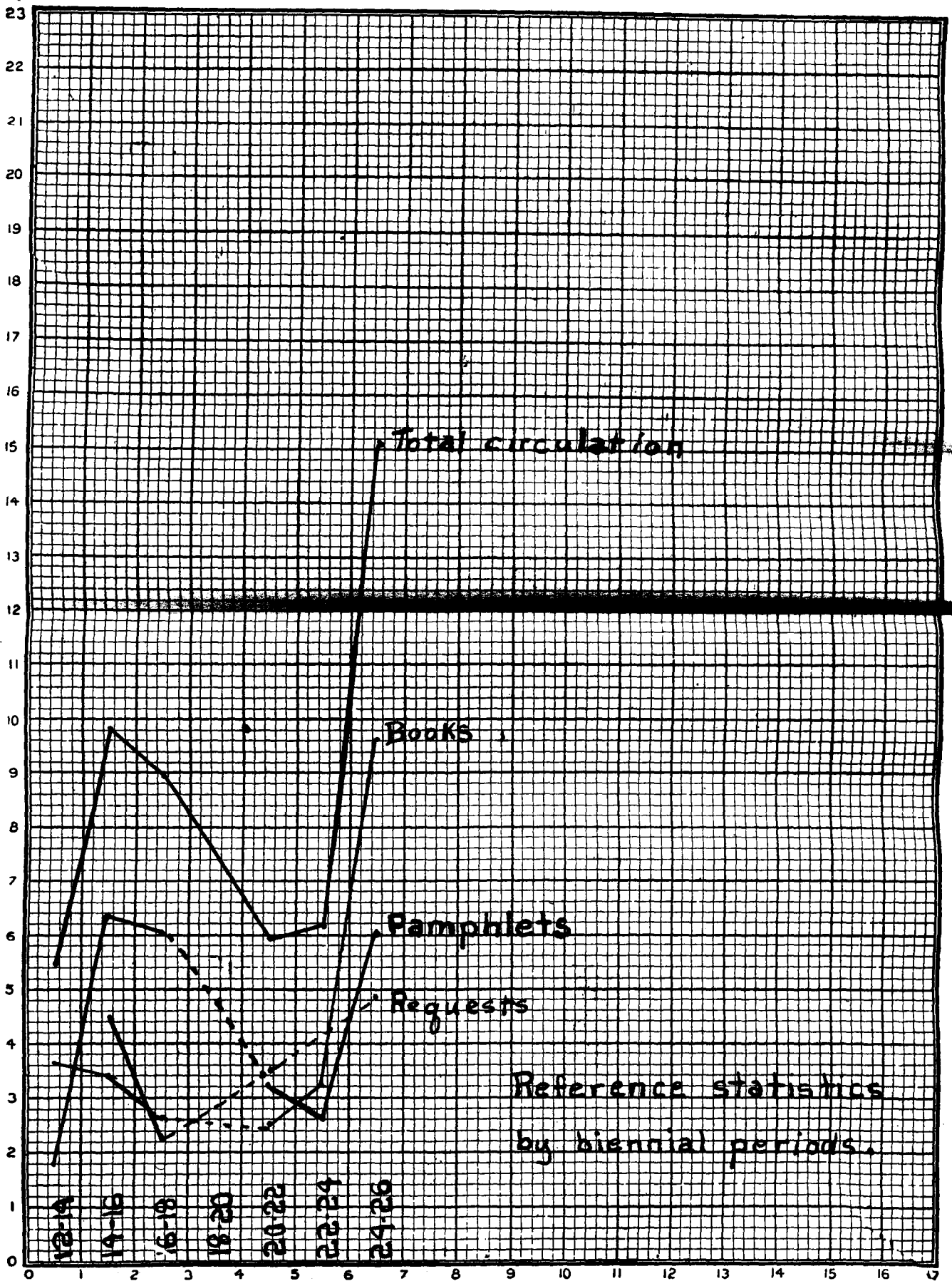
The statistics for the reference department for the biennium, July 1, 1924, to July 1, 1926, show an increase in circulation of 250 per cent as compared with the circulation of the former biennial period. This considerable increase in circulation has been accomplished with no increase in staff.

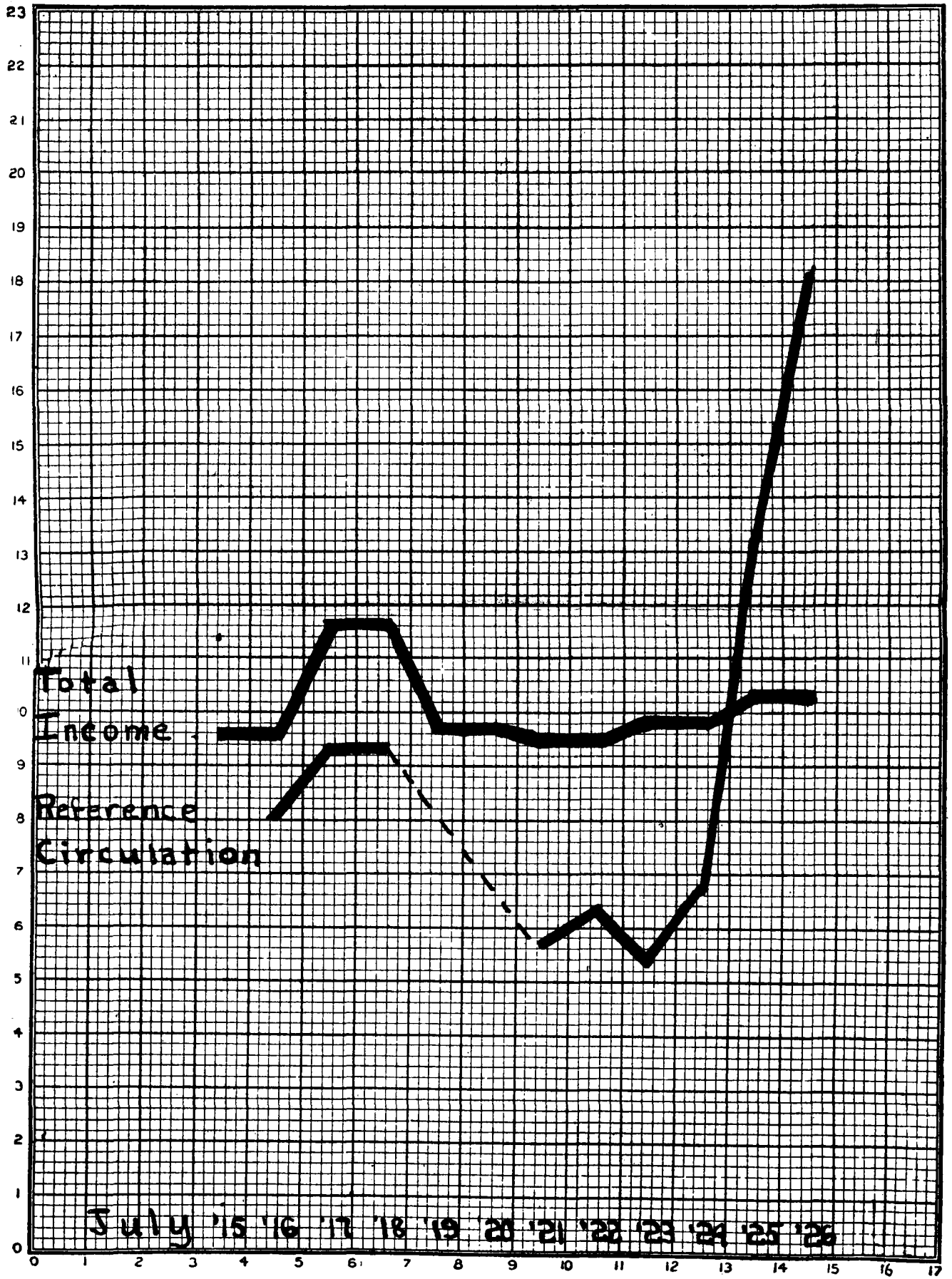
The clientele of the reference department for the past two years has been similar to that of the preceding biennium except that many borrowers have been added to those who were already depending on the reference department for service. The borrowers may still be divided into five groups: (1) teachers, (2) pupils, (3) club women, (4) heads and staffs of state departments, and (5) a large group of people who are not required to study, but who read for their own personal pleasure and profit.

Every effort has been made to serve this varied clientele effectively. About 2,000 new books have been added during the biennium. In buying these books it was the aim of the reference librarian to strengthen the weak spots in the reference collection, notably along the lines of sociology, economics, and Bible study; to provide the best of the current fiction, and to add from time to time new books of travel, biography, literary criticism and scientific books of a popular nature.

The pamphlet and clipping file was completely revised and transferred from unwieldy wooden boxes to metal files. Many new pamphlets and clippings were added and all old material which was either out-of-date or useless for other reasons was discarded. The collection now consists of some 10,000 pieces of usable, up-to-date material. Of this collection, many of the publications are government documents. These have been shelf listed. Especial attention has been given to collecting pamphlets and clippings on North Dakota. This material is in constant demand.







In addition to providing schools with material for debates, contests and special day programs, a special effort has been made to lend the books required for outside reading to those schools whose libraries were inadequate. Another activity of the reference department has been the building up of a large collection of good plays which are borrowed freely by the schools and various community groups.

A complete file of P.T.A. publicity and reference material is kept and lent to many places which are considering organizing, or lent to individuals for reference purposes. An effort has been made to secure many of the books on the "Parent's Book Shelf," to lend to P.T.A. members who wish to do this reading.

The work of the reference department with the clubs has grown appreciably. Programs have been obtained from every conceivable source covering a wide range of subjects, and many special programs have been prepared to meet special needs. During the year 1924-25 ten clubs depended entirely on the Commission for material and during 1925-26 twenty clubs were either using club libraries prepared by the reference department or were receiving regular service.

With the individual reader in mind a large number of reading courses covering many subjects have been collected. These courses are lent to persons who wish to do consistent, constructive reading.

**STATISTICAL REPORT, 1924-26**

**Books**

**Traveling library:**

Number of traveling libraries.....	321
Number of libraries added during period.....	45
Number of books in libraries.....	11,332

**Reference department:**

Number of books.....	8,510
Number of books added during period.....	1,910
Number of pamphlets.....	10,000

**Circulation**

	24-25	25-26	Total
<b>Traveling library</b>			
Number of libraries circulated.....	329	296	625
Number of stations .....			366
Number of books circulated.....	13,958	11,529	25,487
<b>Reference Department:</b>			
Number of requests.....	4,204	5,287	9,491
Number of club libraries sent.....	10	20	30
Number of books in club libraries.....	147	391	538
Number of reference books circulated..	7,873	11,219	19,092
Number of pamphlets .....	5,171	6,429	11,600
Ref circulation	13,991	18,037	31,730
Total circulation .....	29,149	29,568	58,717

30692

27149



**Appropriation, 1925-27**

Books and periodicals.....	\$3,000.00
Binding .....	500.00
Salaries .....	14,440.00
Furniture and fixtures.....	200.00
Stationery and supplies.....	300.00
Printing .....	300.00
Postage .....	200.00
 Total .....	 \$20,840.00

**STATE WORK**

The libraries in the state report some variation in circulation, with Minot topping the list with an increased circulation of 35,000 volumes, 1925-26.

There are no new public library buildings, but the club women of St. Thomas, who maintain without help a library for that place, bought a building which they have made into a very attractive library.

Libraries have been started or reopened at Washburn, Rolla, Brantford and Tolna, all of them under the auspices of the women's clubs except Brantford, where the P.T.A. is sponsoring it.

There have been several librarians' resignations in public libraries and some changes among the club women who are administering libraries for their communities, Bismarek, Bowman, Dickinson and Jamestown being the libraries with municipal support which have changed librarians this year. A corrected list of librarians will be found in the directory.

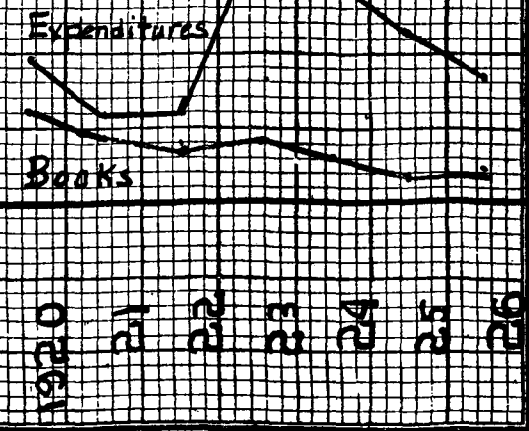
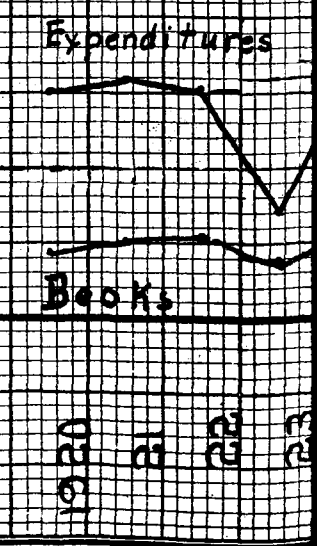
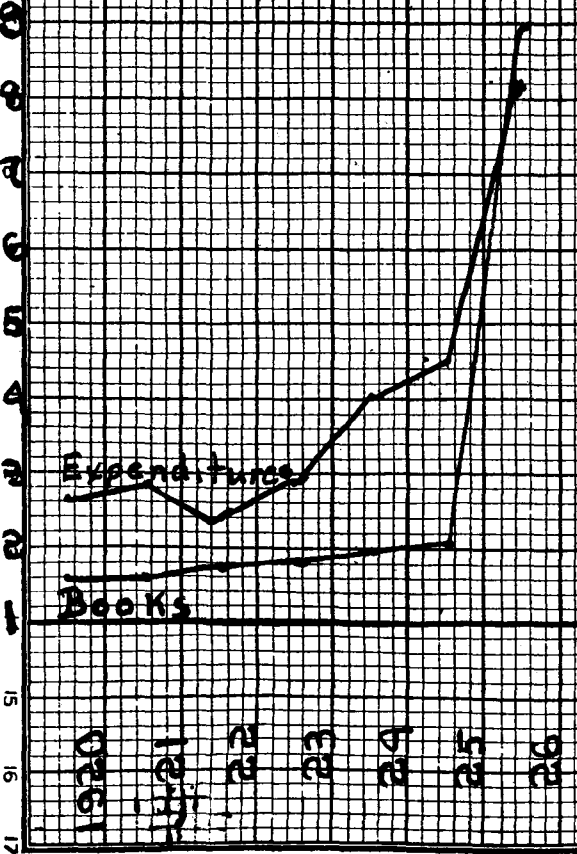
A study of the reports of six of the larger libraries for the past five years shows almost uniformly a direct relation between the book purchases and the circulation. The graph "Comparative Statistics" shows this. Where circulation has been maintained without a corresponding book expenditure it indicates a librarian of unusual ability. The first need for any library is a trained librarian of ability, secondly, a representative collection of books, and thirdly, working conditions which enable her to accomplish the greatest amount of service with the least loss of time and effort.

The following tables outline the work of the various libraries for past two years.

Minot: Circulation increases with book expenditure.

Devil's Lake Cir- culation and ex- penditures fluctuate uniformly.

Dickinson: A less- ened book expen- diture results in a lower circulation.



STATISTICS OF ASSOCIATION LIBRARIES, 1924-26

Place	Population	Income		Expenditures				Volumes	Borrowers	Circulation			Hours Open Per Week	Terms of Lending	County Borrowers	Place
		25	26	25	26	25	26			25	26	Total				
1. Ashley	962	.....	199	.....	.....	.....	188	4,159	113	.....	3,353	.....	6	Fee	.....	Ashley
2. Bathgate	828	.....	50	.....	.....	.....	50	500	73	.....	1,200	.....	1½	Free	.....	Bathgate
3. Beach	1,148	.....	62	.....	50	62	62	1,700	696	.....	9,360	.....	5	.....	46	Beach
4. Cando	1,055	200	500	.....	200	200	500	2,300	75	.....	2,340	.....	4	Fee	.....	Cando
5. Cavalier	810	101	48	57	.....	101	2	737	407	788	1,336	2,119	2½	Free	.....	Cavalier
6. Center	200	.....	52	60	50	52	5	1,050	270	2,640	1,000	3,640	.....	Free	50	Center
7. Columbus	471	65	69	49	50	65	69	481	100	879	715	1,594	2	Free	.....	Columbus
8. Courtenay	328	55	40	24	25	40	35	691	79	870	837	1,707	2	Fee	.....	Courtenay
9. Drake	636	.....	.....	.....	75	.....	.....	275	85	.....	.....	.....	2	.....	15	Drake
10. Edgeley	735	78	108	78	.....	78	65	1,588	45	3,640	.....	.....	3	.....	4	Edgeley
11. Enderlin	1,824	.....	.....	.....	.....	.....	.....	3,857	800	.....	8,320	.....	4	Free	.....	Enderlin
12. Fessenden	757	188	.....	112	.....	184	.....	.....	.....	.....	1,144	.....	3	.....	.....	Fessenden
13. Glenburn	248	.....	.....	.....	33	.....	48	800	22	.....	.....	.....	2	Fee	5	Glenburn
14. Hamilton	179	.....	.....	.....	35	.....	.....	.....	600	.....	.....	.....	2	Adult fee	.....	Hamilton
15. Heaton	200	.....	.....	.....	8	.....	8	152	85	250	884	1,134	Bank	Free	20	Heaton
16. Hettinger	1,009	76	53	50	38	76	53	580	217	.....	1,000	.....	2	Free	.....	Hettinger
17. Hope	577	.....	17	.....	13	.....	.....	628	40	314	4,756	5,060	2	Free	.....	Hope
18. Lakota	869	291	290	188	95	275	170	2,156	.....	5,306	.....	.....	23	Free	.....	Lakota
19. LaMoure	994	223	604	121	299	265	428	2,399	550	3,004	3,900	6,904	6	.....	.....	LaMoure
20. Leeds	668	174	94	98	75	174	94	2,820	272	4,591	4,599	9,190	6	.....	5	Leeds
21. Maddock	383	.....	.....	.....	80	.....	90	660	330	572	2,000	2,572	3½	.....	35	Maddock
22. Mandan	5,068	.....	.....	.....	.....	.....	.....	4,500	.....	.....	5,500	.....	8	.....	.....	Mandan
23. Milton	370	.....	.....	.....	70	.....	70	850	440	.....	8,000	.....	2	Fee	300	Milton
24. Pembina	802	.....	.....	.....	65	.....	65	800	150	.....	2,500	.....	4	Free	20	Pembina
25. Rolla	686	.....	.....	.....	22	.....	54	385	140	.....	.....	.....	4	Fee	.....	Rolla
26. St. Thomas	576	.....	.....	.....	52	.....	550	1,203	201	1,100	5,220	6,320	3	Free	.....	St. Thomas
27. Sanborn	391	29	10	22	15	23	25	877	22	50	500	550	1	Fee	4	Sanborn
28. Tioga	320	48	68	33	75	40	76	583	.....	450	1,479	1,929	.....	Free	.....	Tioga
29. Tolna	192	.....	.....	25	25	.....	.....	111	.....	.....	520	.....	3	.....	.....	Tolna
30. Turtle Lake	395	.....	.....	.....	.....	.....	.....	472	.....	.....	1,560	.....	2	Fee	.....	Turtle Lake
31. Van Hook	331	8	11	80	64	120	78	618	252	.....	3,120	.....	2	Free	70	Van Hook
32. Velva	336	.....	.....	.....	.....	.....	.....	1,200	200	.....	5,000	.....	2	.....	.....	Velva
33. Washburn	558	.....	.....	.....	.....	7	.....	.....	.....	.....	.....	.....	4	.....	.....	Washburn
34. Wimbledon	521	5	7	46	28	52	33	700	30	.....	.....	.....	1	.....	.....	Wimbledon

STATE OF NORTH DAKOTA

STATISTICS OF LIBRARIES WITH TAX SUPPORT, JULY 1, 1924-JUNE 30, 1926

PLACE	Popula- tion	Receipts				Expenditures							
		Tax		Total Income		Salaries		Heat, Rent Light		Books Bind Magazines		Total Expenditures	
Over 2,500		1925	1926	1925	1926	1925	1926	1925	1926	1925	1926	1925	1926
1. Fargo .....	24,921	10,674	10,860	14,535	12,796	5,441	6,072	876	1,000	2,632	2,456	13,670	12,124
2. Grand Forks .....	15,168	6,500	7,000	7,459	8,031	4,003	4,153	817	862	1,827	1,435	7,453	7,447
3. Minot .....	12,245	8,320	8,892	8,787	9,387	4,091	4,205	582	580	1,870	4,110	8,034	10,228
4. Bismarck .....	9,150	4,000	4,970	4,093	4,970	1,850	1,612	429	500	437	2,326	3,700	4,960
5. Jamestown .....	7,230	4,908	4,476	5,967	5,546	1,704	3,309	809	922	1,490	1,996	6,096	7,432
6. Devils Lake .....	5,409	4,656	4,930	4,927	5,264	1,622	1,676	639	754	1,558	1,005	4,633	4,646
7. Valley City .....	4,695	3,152	5,940	3,414	6,209	785	1,591	450	540	457	1,622	3,194	5,605
8. Dickinson .....	4,467	3,000	3,000	3,129	3,133	2,056	2,040	335	360	475	449	3,542	3,363
9. Williston .....	3,948	5,183	5,160	5,876	5,515	2,529	2,641	566	502	1,331	1,776	5,160	5,573
10. Wahpeton .....	3,187	3,940	3,973	4,149	4,104	720	780	176	.....	202	2,040	1,400	5,503
11. Grafton .....	2,913	1,700	1,352	2,065	1,412	557	597	223	150	418	185	1,333	1,072
<b>Under 2,500</b>													
12. Bowman .....	775	1,014	1,219	1,098	1,895	620	620	124	130	116	211	1,175	982
13. Carrington .....	1,315	755	1,078	785	1,452	530	650	140	138	137	277	731	1,008
14. Casselton .....	1,416	300	280	326	281	123	104	.....	.....	226	148	362	272
15. Ellendale .....	1,094	325	450	439	591	310	300	.....	.....	143	164	510	476
16. Hankinson .....	1,390	.....	200	.....	.....	.....	.....	.....	.....	.....	.....	.....	.....
17. Langdon .....	1,239	.....	425	489	651	153	120	192	277	110	80	516	656
18. Leonard .....	541	250	250	252	270	125	125	14	8	.....	110	160	281
19. Lidgerwood .....	1,009	1,600	1,400	2,032	1,585	955	924	75	89	101	132	2,069	1,539
20. Lisbon .....	1,626	2,000	2,000	2,071	2,063	375	379	305	300	307	259	1,649	2,058
21. Mayville .....	1,345	800	1,000	876	1,245	400	350	299	122	89	195	833	852
22. Mott .....	810	400	400	466	431	180	180	180	180	180	1	397	395
23. New Rockford .....	2,050	90	100	375	.....	176	.....	.....	.....	242	.....	427	.....
24. Oakes .....	1,509	975	939	1,043	1,068	500	380	54	.....	156	312	716	1,142
25. Park River .....	1,044	400	400	416	445	180	190	.....	.....	97	106	292	315
26. Rugby .....	1,509	318	300	334	318	48	.....	.....	276	54	102	387	449

STATISTICS OF LIBRARIES WITH TAX SUPPORT, JULY 1, 1924-JUNE 30, 1926—Continued

PLACE	Volumes		Borrowers		Circulation			Hours open per week	Terms of Lending	County Borrowers		PLACE
	1925	1926	1925	1926	1925	1926	Total			1925	1926	
<b>Over 2,500</b>												
1. Fargo .....	19,990	20,598	13,550	14,384	103,242	111,479	214,721	72	Free	445	530	Fargo
2. Grand Forks .....	10,846	10,880	5,126	4,919	67,934	62,951	130,885	63	"	60	.....	Grand Forks
3. Minot .....	9,751	11,678	7,692	7,309	58,953	94,384	152,337	72	"	186	206	Minot
4. Bismarck .....	6,568	7,281	3,473	3,359	31,218	19,436	50,754	42	"	3	.....	Bismarck
5. Jamestown .....	7,887	8,813	3,523	3,871	42,815	51,771	94,585	42	"	.....	75	Jamestown
6. Devils Lake .....	6,898	7,224	2,617	2,654	27,490	26,266	53,756	36	"	.....	2	Devils Lake
7. Valley City .....	9,201	9,413	1,611	2,054	18,861	20,484	139,345	36	"	.....	.....	Valley City
8. Dickinson .....	6,506	6,688	.....	.....	10,888	14,005	24,893	36	"	.....	.....	Dickinson
9. Williston .....	6,927	7,264	2,208	2,360	23,906	26,844	50,750	36	"	224	220	Williston
10. Wahpeton .....	6,060	6,626	887	1,013	15,679	15,090	30,769	13	"	.....	30	Wahpeton
11. Grafton .....	5,607	2,292	564	730	6,080	7,460	13,540	16	"	11	4	Grafton
<b>Under 2,500</b>												
12. Bowman .....	3,009	3,170	98	161	5,310	6,352	11,862	16	Free	.....	.....	Bowman
13. Carrington .....	4,274	4,520	1,016	1,130	8,598	11,950	20,548	27 1/2	"	.....	340	Carrington
14. Casselton .....	1,075	1,040	470	583	4,080	4,060	8,140	5	"	.....	.....	Casselton
15. Ellendale .....	2,850	2,945	775	886	8,497	9,479	17,976	14	"	.....	246	Ellendale
16. Hankinson .....	1,192	1,332	725	311	2,440	1,221	3,661	3 1/2	"	.....	11	Hankinson
17. Langdon .....	2,440	2,561	102	56	7,246	5,307	12,553	8	Fee	.....	.....	Langdon
18. Leonard .....	899	1,095	272	150	1,297	1,302	2,599	6	Free	.....	.....	Leonard
19. Lidgerwood .....	3,025	3,286	727	704	15,389	13,858	29,247	35	"	354	.....	Lidgerwood
20. Lisbon .....	2,582	2,608	1,195	1,127	10,633	13,427	24,065	18	"	93	97	Lisbon
21. Mayville .....	2,456	2,967	468	530	2,965	3,148	6,113	12	"	50	.....	Mayville
22. Mott .....	1,918	2,006	138	140	4,266	3,864	8,130	6	"	15	.....	Mott
23. New Rockford .....	1,472	1,500	128	.....	.....	5,000	.....	8	Fee	.....	.....	New Rockford
24. Oakes .....	3,464	3,663	485	674	7,983	12,382	20,365	16	"	54	105	Oakes
25. Park River .....	2,604	2,729	1,032	923	6,485	6,765	13,885	8	"	63	.....	Park River
26. Rugby .....	1,585	.....	642	665	5,120	5,290	10,510	4	.....	.....	.....	Rugby

## STATE INSTITUTIONAL LIBRARIES

Place	Name	Volumes	Employees			Amount Spent for Books	Librarian
			Full	Part			
Bismarck	Historical society	24,001	1	0		Mrs. Florence Davis	
Bismarck	Law	20,000	1	0	2,000	E. J. Taylor	
Bismarck	Library commission	19,842	4	1	2,500	Lillian E. Cook	
Bismarck	Penitentiary		1	1		Warden John Lee	
Bottineau	Forestry school	1,500		4		L. M. Minkle	
Devils Lake	School for the deaf	2,361		1		Burton Driggs	
Dickinson	Normal	3,000			1,000	E. O. Purtee	
Ellendale	Normal and industrial school	5,910	1		500	Carrie Tuttle	
Fargo	Agricultural college	40,248	4	2	3,700	Mrs. Ethel McVeety	
Grafton	School for the feeble-minded	202		1	50	Maud Stewart	
Grand Forks	University	84,729	5	9	7,500	Alfred Keator	
Jamestown	Insane hospital	1,700	1	1	150	Mrs. A. W. Guest	
Mandan	Training school				200	W. F. McClelland	
Mayville	State teachers college	11,496	1	4	1,869	Mrs. Hazel Webster Byrnes	
Minot	State teachers college	8,548	2	1		Mrs. Mable W. Etheridge	
Valley City	State teachers college	22,222	3		1,817	Mathilde Maier	
Wahpeton	State science school	2,791	1	1	323	Lilian Mirick	

---

**DIRECTORY OF NORTH DAKOTA LIBRARIES**


---

T—Tax Supported		A—Association or Club		S—Special	
Place	Name of Size Library	Kind	Vol- umes	Librarian	
Ashley .....	962	Public .....	A	4159	Mrs. H. D. Piper
Bathgate .....	342	Public .....	A	500	Annie Slagerman
Beach .....	1148	Public .....	A	1700	Mrs. John Koehane
Bismarek .....	9150	Public .....	T	7281	Pauline Rich
		State Histori- cal .....	S	24001	Mrs. Florence Davis
		State Law .....	S	20000	E. J. Taylor
		State Library Commission	S	19842	Lillian E. Cook
		State Peni- tentiary .....	S		Warden John Lee
Bottineau .....	1067	Forestry School .....	S	1500	L. M. Minkle
Bowman .....	775	Public .....	T	3170	Mrs. Emil Scow
Cando .....	1055	Public .....	A	2300	Mrs. C. J. Lord
Carrington .....	1315	Public .....	T	4520	Edna Parker
Casseltown .....	1416	Public .....	T	1040	Mrs. E. D. Scott
Cavalier .....	810	Public .....	A	737	Mrs. Fred Harris
Center .....	200	Public .....	A	1050	Mrs. M. Jennings
Columbus .....	471	Public .....	A	481	Mrs. P. J. Broen
Courtenay .....	328	Public .....	A	691	Mrs. A. A. Hoffman
Devils Lake ...	5409	Public .....	T	7224	Marie O'Brien
		State Deaf School .....	S		Burton W. Driggs
Dickinson .....	4467	Public .....	T	6688	Gertrude Voldal
		State Normal School .....	S		E. O. Purtee
Drake .....	636	Public .....	A	275	Mrs. A. B. Parmenter
Edgeley .....	735	Public .....	A	1588	Mrs. Ralph Stevens
Ellendale .....	1094	Public .....	T	2945	Mrs. V. D. Coleman
		Normal and Industrial School .....	S	5910	Carrie Tuttle
Enderlin .....	1824	Public .....	A	3857	Mrs. E. T. Danielson
Fargo .....	24921	Public .....	T	20598	Inga Bynning
		High School ..	S	3768	Esther C. Goudy
		Agricultural College .....	S	40248	Mrs. Ethel McVeety
		Masonic Li- brary .....	S		Clara Richards
Fessenden .....	757	Public .....	A		Ella Marie Speiser
Glenburn .....	248	Public .....	A	800	Mrs. Edward Simpkins
Grafton .....	2913	Public .....	T	2292	Ruth Nollman
		School Feeble Minded .....	S	202	Maud Stewart
Grand Forks ..	15168	Public .....	T	10880	Ruth O. Brown
		University ...	S	84729	Alfred Keator
Hamilton .....	179	Public .....	A	600	Mrs. Robert Kippen
Hankinson .....	1390	Public .....	T	1332	Mrs. George Schuett
Heaton .....	200	Public .....	A	152	C. I. Turner
Hettinger .....	1009	Public .....	A	580	Mrs. F. T. Lembke
Hope .....	577	Public .....	A	628	Mrs. Katie Gumb

Jamestown	7230	Alfred Dickey T	8831 Margaret Mueller
		Insane Hos- pital	Mrs. A. W. Guest
		Jamestown College	Dean F. B. Taylor
Lakota	869	Public A	2045 Mrs. Frank Pierce
LaMoure	994	Public T	2399 Mrs. D. A. Martens
Langdon	1239	Public T	2569 Mrs. D. W. Barker
Leeds	668	Public A	2820 Nora Jacobsen
Leonard	541	Watts Free (Twp.)	1095 Agnes Roney
Lidgerwood	1009	Public T	3286 Mrs. Elizabeth Kings
Lisbon	1626	Public T	2608 Mrs. H. S. Oliver
Maddoek	583	Public A	660 Leila Anderson
Mandan	5068	Public A Training School	4500 Mrs. John Biggs Mrs. W. F. McClelland
Mayville	1345	Public T State Teach- ers College	2967 Cora I. Ames 11496 Mrs. Hazel W. Byrnes
Milton	370	Community A	850 Mrs. J. H. McCullock
Minot	12245	Public T State Teach- ers College	11678 Catherine McSherry 8548 Mrs. Mable W. Etheridge
Mott	810	Inez Hen- driekson	2006 Louise Wagner
New Rockford	2050	Public T	1500 Mrs. E. R. Davidson
Oakes	1509	Public T	3663 Alice Craig
Park River	1044	Public T	2729 Priscilla Overbye
Pembina	665	Public A	800 Mrs. Pauline Brennan
Rolla	636	Public	385 Mrs. C. Jacobsen
Rugby	1509	Public T	1757 Hattie S. Sikes
St. Thomas	443	Study Club A	1203 Mrs. E. T. Thompson
Sanborn		Mysotis Club A	877 Mrs. Robert E. Kee
Tioga	365	Masonic Lodge	583 W. E. Berg
Tolna	192	Public A	111 Mrs. C. J. Hand
Turtle Lake	472	Public A	472 Mrs. L. J. Vonderheide
Valley City	4695	Public T State Teach- College	9413 Harriet Anfinson 22222 Mathilde Maier
Van Hook	368	Women's Civ- ic League	618 Charlotte Stenshoel
Velva	872	Public A	1200 Mrs. I. A. Beebe
Wahpeton	3187	Leach Public State Science School	6626 Mrs. Jessie Searing 2791 Lillian Mirick
Washburn	618	Public A	Mrs. G. M. Wallbrecht
Williston	3948	James Me- morial	7264 Mrs. Ethel H. Kuenning
Wimbledon	447	Public A	700 Mrs. W. O. Joos



State  
Doc.

Z

733

. N67

N68

1924-

1926

**LOAN**

**COPY**